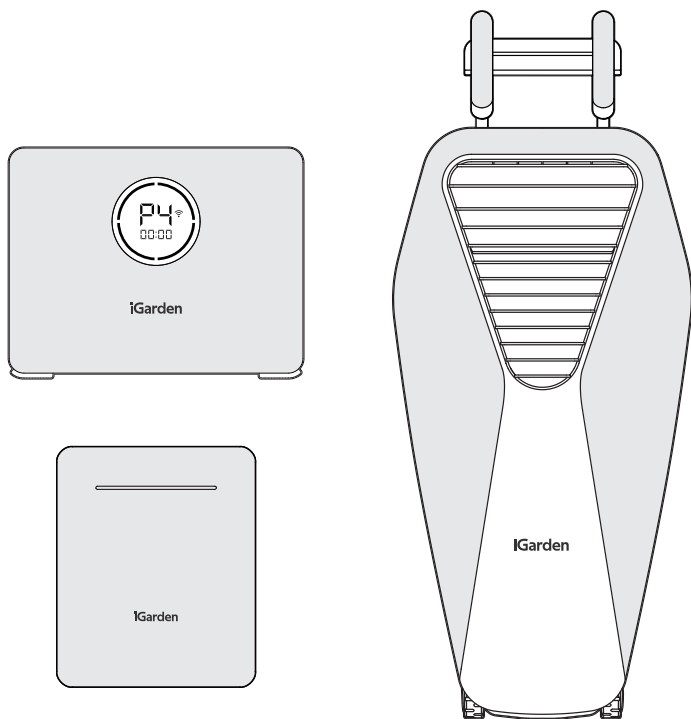


# iGarden



## iGarden Swim Jet X Series

— USER MANUAL —

English / Imperial Units

Please read this manual carefully before installing and operating your Swim Jet X Series.

---

# Table of Contents

## 1 Important Safety Information

01

1.1 Charging Safety

1.2 Rotating Parts

1.3 Children's Safety

## 2 General Safety Information

01

2.1 Read Before Use

2.2 When NOT to Use the Product

2.3 Pre-Use Checklist

2.4 Safe Operation

## 3 Environmental Requirements

03

## 4 Product Overview

04

4.1 What's in Box

4.2 Product Diagram

4.3 Product Models & Specifications

4.4 Product Dimensions

4.5 Optimal Swimming Zone

**5 Product Usage Guide**

10

5.1 Installation Location &amp; Available pool coping types

5.2 Operating Steps

5.3 Control Buttons Instructions

5.4 Power Box Charging Instructions

5.5 App Usage Guide

**6 Product Maintenance & Storage**

21

6.1 Maintenance Tips

6.2 Storage Requirements

**7 Error Codes & Troubleshooting**

22

7.1 Error

7.2 Warning

**8 Disposal**

24

**9 Certifications**

24

---

# 1 Important Safety Information

## 1.1 Charging Safety

- Do NOT charge the product within 11.48 ft of the pool. Risk of electric shock!
- Do NOT charge while the product is in use.

## 1.2 Rotating Parts

- This swim jet contains a high-speed rotating motor shaft and impeller. Although the product is designed to prevent entanglement, to ensure maximum safety, it is recommended to wear a swimming cap during use. Additionally, never allow hair, clothing, hands, or any objects to come near side rear inlet of jet.

## 1.3 Children's Safety

- Do NOT allow children under 16 to use this product without adult supervision.

# 2 General Safety Information

## 2.1 Read Before Use

Please carefully read and follow all safety instructions. Non-compliance may lead to personal injury or property damage. The manufacturer accepts no liability for any loss or damage resulting from improper installation or use.

## 2.2 When NOT to Use the Product

### 2.2.1 User Restrictions

- Individuals who consume alcohol, medication, or any substances that may impair your reaction or judgment.
- Individuals with limited physical, sensory, or cognitive abilities unless supervised by a qualified person.
- Users with implanted medical devices (e.g., pacemakers, cochlear implants, hearing aids, defibrillators) must keep a safe distance due to electromagnetic fields. Consult device manufacturers for safety guidelines.

## 2.2.2 Product conditions that prohibit use

Do NOT use the device if:

- The jet, power box, or cables show signs of damage, wear, or contamination.
- The power box is swollen, deformed, leaking, overheating, emitting odor, smoke, or sparks.
- Water has entered the power box. Place it in a dry open area and contact customer service.

## 2.3 Pre-Use Checklist

Before each use, ensure:

- The environment meets the requirements in Part 3.
- The power box is NOT charging.
- The jet is secured with the safety tether (see Part 5.2.1 for details).
- No standing water is present around the power box during operation.
- There are no objects near the jet inlet. The jet inlet has no blockage risk.
- The jet is securely mounted; do not sit or place weight on it.
- The jet is fully submerged under water to avoid motor damage.

## 2.4 Safe Operation

- Always stay away of the rear water-intake area.
- Ensure children or pets cannot dislodge the jet into the pool.
- Do NOT operate the power box in rain or humid environments.
- Do NOT immerse or wet the power box.
- Do NOT power on the jet outside the water or it will void warranty.
- Do NOT operate in icy water or it will void warranty.
- Do NOT disassemble or puncture the power box.
- Do NOT short-circuit the battery using wires or metal objects.
- Stop using immediately and power off the power box after any heavy impact.
- Use only the accessories provided. If a replacement is needed, please contact iGarden Customer Support through the official website.

---

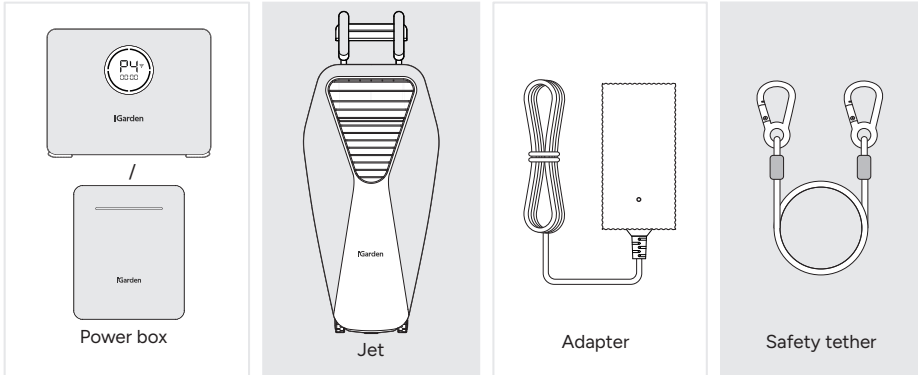
## 3 Environmental Requirements

To increase product longevity, operate only within the following ranges. Use outside these ranges will void the warranty.

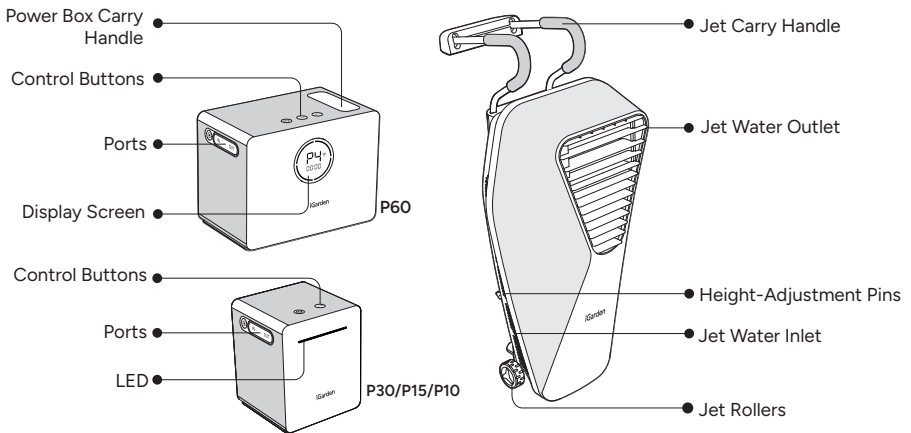
<b>Water Quality Requirements</b>	
Water Temperature	32–104°F (0–40°C)
pH Scale	6.8–7.8
Free Available Chlorine	≤ 5.0 mg/L
Combined Chlorine	< 0.6 mg/L
Cyanuric Acid	≤ 100 mg/L
Metals	≈ 0 mg/L
Carbonate Hardness	≥ 35.7mg/L
Ozone	0 mg/L
Chlorite + chlorate	≤ 30 mg/L
Oxidation-reduction potential (ORP)	≥ 700 mV
<b>Air Condition Requirements</b>	
Operating/ storage temperature	Operating/ storage temperature: 32–113°F (Optimal 68–86°F )
Relative humidity	< 98%

## 4 Product Overview

### 4.1 What's in Box



### 4.2 Product Diagram



### 4.3 Product Models & Specifications

<b>Power Box</b>						
Model	X35-P60	X35-P30	X30-P30	X30-P15	X25-P15	X20-P10
Battery Model	P60	P30		P15		P10
Weight	25.6 lb	14.1 lb		8.8 lb		8.8 lb
Protection Rating	IP65					
Battery Type	Lithium-ion (NCM)					
Battery Capacity	60 Ah	30 Ah		15 Ah		10 Ah
Battery Energy	1512 Wh	756 Wh		378 Wh		252 Wh
Runtime	1.5 h-10 h	0.7 h-5 h	0.9 h-5 h	0.5 h-2.5 h	0.7 h-2.5 h	0.7 h-1.7 h
Charging Time	7 h	7.5 h		4.5 h		3.5 h
Charging Temperature	32-113°F (Optimal 68-86°F)					
Operating Temperature	32-113°F (Optimal 68-86°F)					
Storage Temperature	32-113°F (Optimal 68-86°F)					
<b>Jet</b>						
Specification	X35		X30		X25	X20
Weight	30.9 lb					
Power Cable Length	6.56 ft					
Suitable Pool Size	>6.56 ft x 13.12 ft					

Protection Rating	IP68					
Rated Output Power	1000W	700W	400W	300W		
Max Outlet Water Speed	11.5 ft/s	9.8 ft/s	8.2 ft/s	6.6 ft/s		
Max Outlet Water Flow	1100 GPM	880 GPM	790 GPM	660 GPM		
Max Water Flow @1.5m	2400 GPM	1900 GPM	1700 GPM	1500 GPM		
Flow Speed @1.5m	75s / 100yards	90s / 100yards	100s / 100yards	110s / 100yards		
Operating Temperature	41-104°F					
Storage Temperature	32-113°F					
<b>Charger</b>						
Cable Length	4.92 ft					
Input Voltage	110 V-240 V					
Input Frequency	50 Hz/60 Hz					
<b>Duration time (h)</b>						
Operation gear	X35-P60	X35-P30	X30-P30	X30-P15	X25-P15	X20-P10
P1	10.0	5.0	5.0	2.5	2.5	1.7
P2	3.4	1.7	2.0	1.0	1.3	1.2
P3	1.9	0.9	1.4	0.7	1.0	0.9
P4	1.5	0.7	0.9	0.5	0.7	0.7

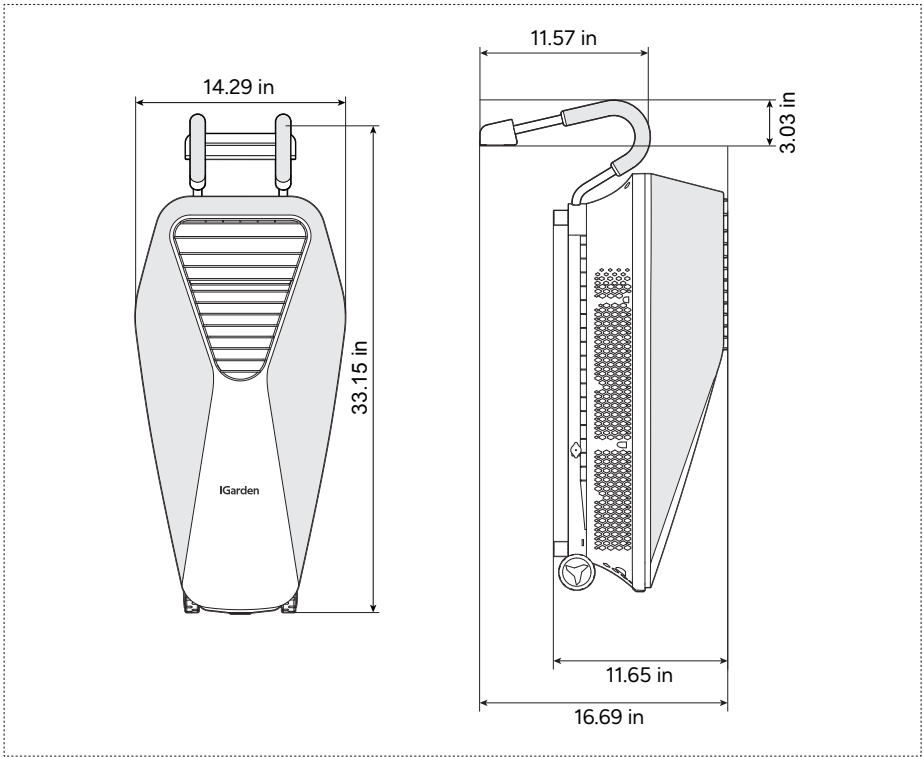
---

**Flow speed at 1.5m (Starting line of suitable swim zone) (s / 100yards)**

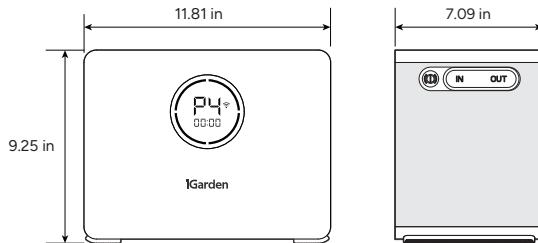
\*This is theoretical pace just for reference

Operation gear	X35-P60	X35-P30	X30-P30	X30-P15	X25-P15	X20-P10
P1	195	195	195	195	195	195
P2	112	112	114	114	120	148
P3	90	90	100	100	110	120
P4	75	75	90	90	100	110

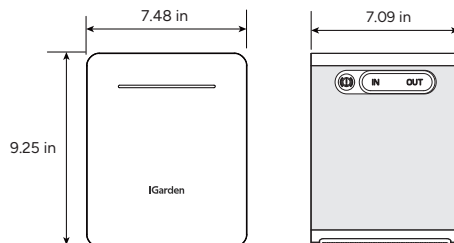
#### 4.4 Product Dimensions



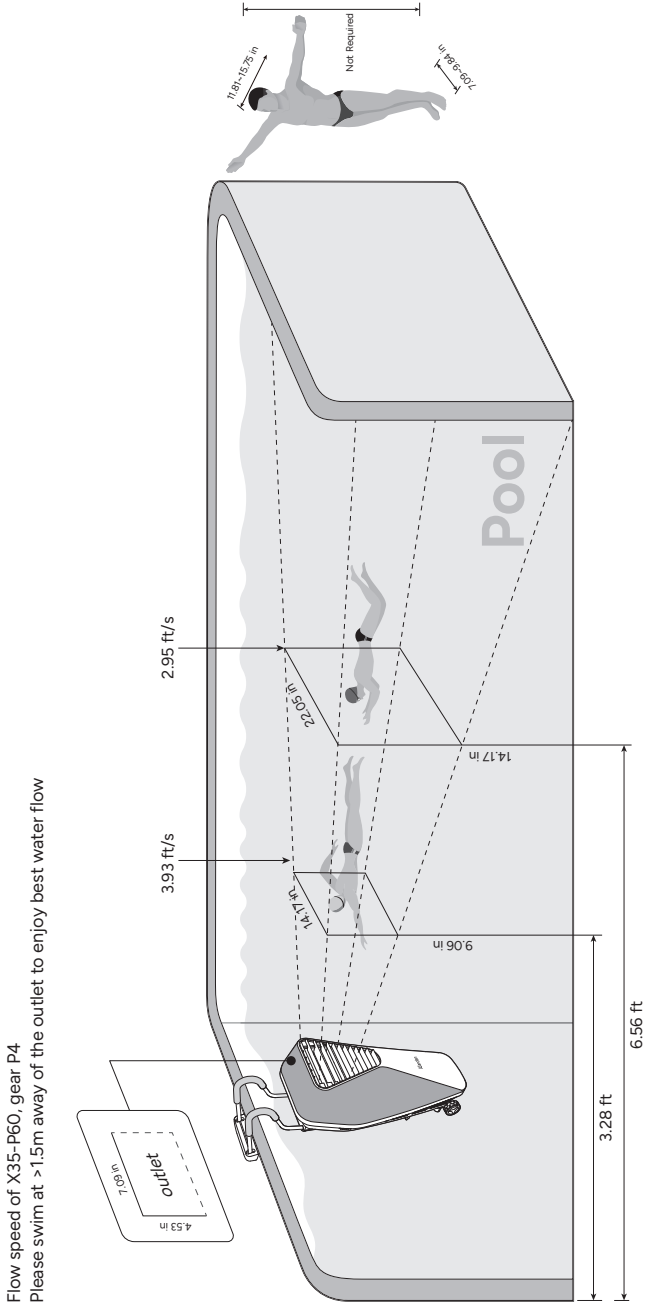
#### P60



#### P30/P15/P10



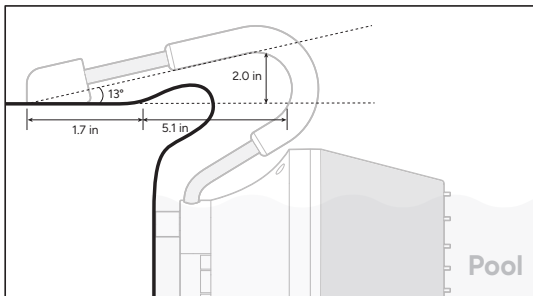
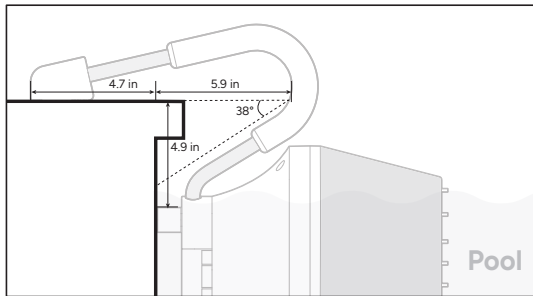
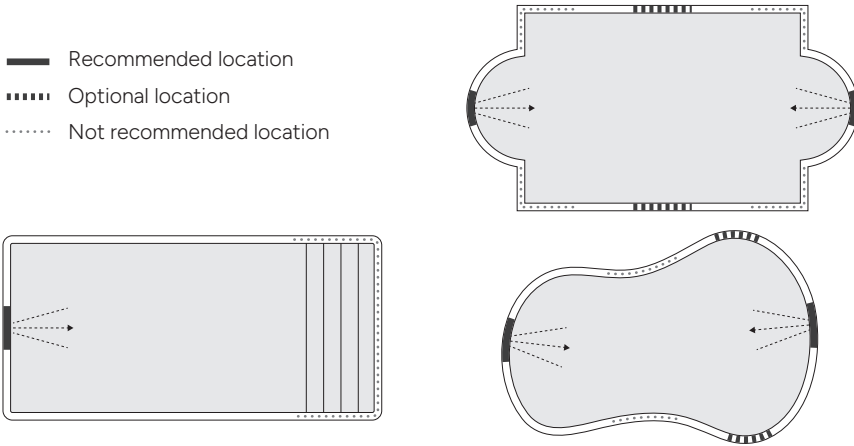
## 4.5 Optimal Swimming Zone



## 5 Product Usage Guide

### 5.1 Installation Location & Available pool coping types

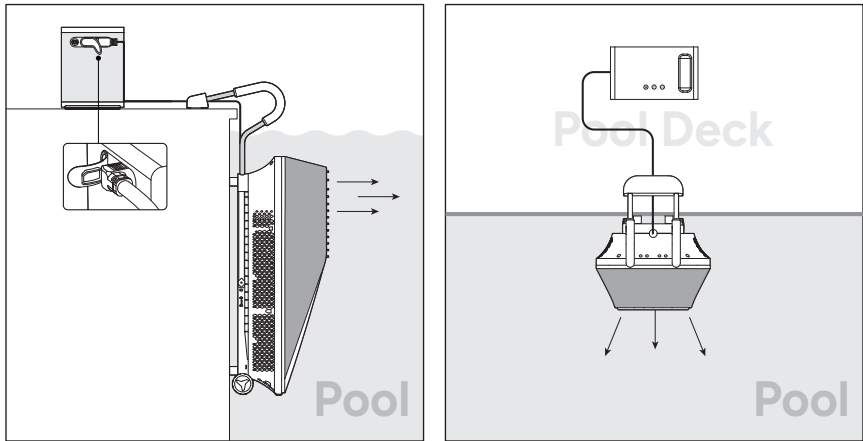
- Recommended location
- Optional location
- ..... Not recommended location



---

## 5.2 Operating Steps

- Place the jet and the power box on the flat pool deck.
- Lower the jet along the pool wall into the water. Prevent the plug from falling into the water.
- Adjust the height to position the water outlet correctly.
- Connect the power cable to the power box's discharge port. Do NOT uncap the protective cover.
- Power on and operate the device (see Part 5.3 for detailed operating guideline). Make sure the jet had connected to the power box before power on.



### 5.2.1 Operation Notes

#### Displacement-detection and Shutdown function

For user safety, the battery monitors jet's position during operation with a gyroscope. If any displacement is detected, the battery will trigger the buzzer to sound once and stop automatically.

#### Jet's Outlet Height Settings

- Swimming Training

Position the top edge of the outlet 2–4 in below the water surface to achieve a smoother and more stable flow.

- Recreational Splashing

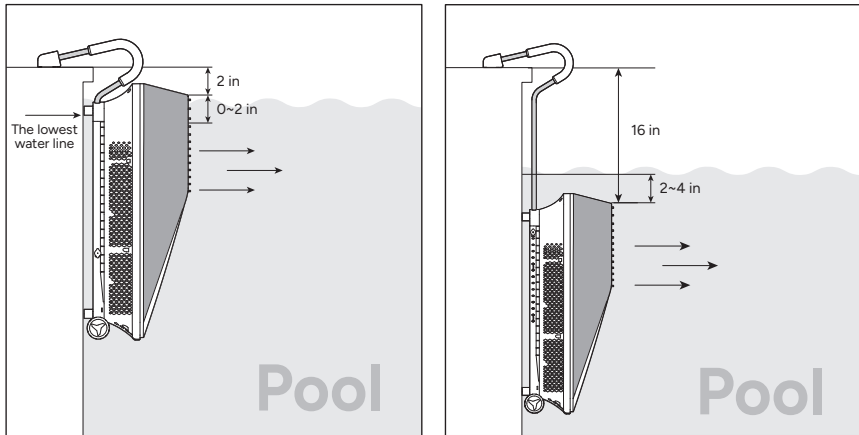
Position the top edge of the outlet 0–2 in above the water surface for surface spray and fun.

- Safety Notice

Do NOT set the top edge of the outlet more than 2 in above the water surface, as this may affect performance.

- Height Adjustment

The outlet height is adjusted using the side locking pins, the adjustable height range is 2–16 in . Refer to the pictures below for more details.



### Removing the adjustment knob

- Stand at the back of the jet.
- Firmly press the knob inward with both hands.
- Turn the vertical knob inward until it becomes horizontal.
- Pull the knob outward to remove it.

### Adjusting the outlet of the jet

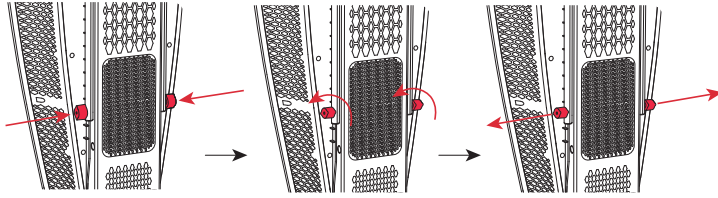
Move the handle up or down to set the outlet of the jet to the desired height.

### Installing the adjustment knob

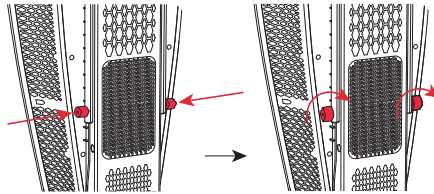
- Align the hole on the handle with the fixing hole on the machine.
- Insert the knob (in a horizontal position) through the handle and into the fixing hole of the jet.
- Press the knob cover firmly against the handle, then turn the knob from horizontal to vertical.

### Installing the adjustment knob

After adjustment, place the jet in the pool to test the height of the jet outlet. If the height is not suitable, repeat the steps above.



Steps for removing knob

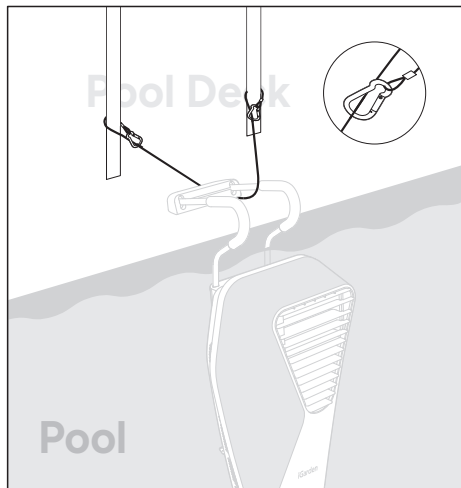


Steps for installing knob

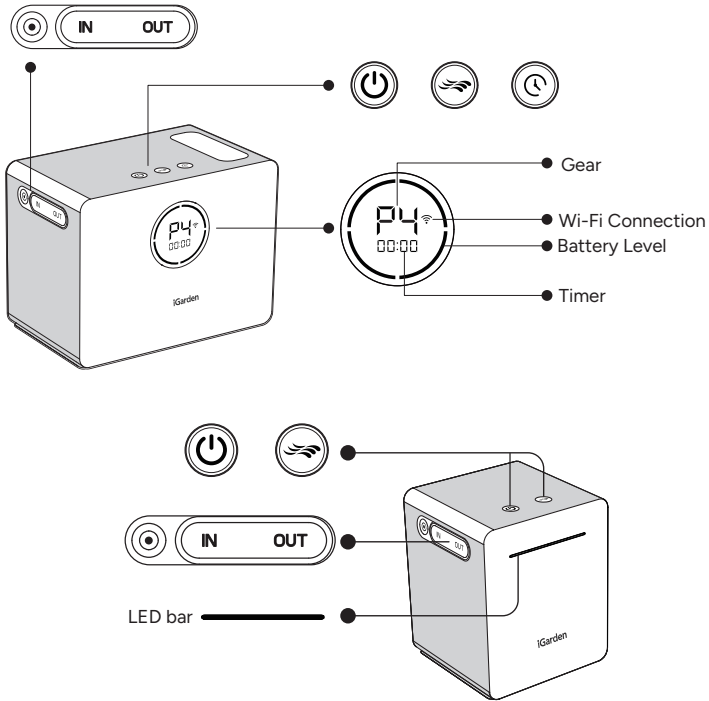
### Safety Tether

Secure the jet to a fixed anchor point with the safety tether during use.



Please ensure the safety tether is not under tension in its normal state; it only needs to prevent the jet from falling off the pool wall.





### 5.3 Control Buttons Instructions






### Buttons & Functions

Button	Function	Description
 Power switch	Connects to power	Press the power switch and then the power button to turn on.
	Cuts off power	Press the power button first, then the power switch to turn off.
 Power button	Power on	Short press to power on.
	Power off	Press 3 sec to power off.

 Gear	Adjust gears	Short press to change gear 6 gears: P1/P2/P3/P4/PE/PF; P1-P4: Different flow speed, from low to high; PE: Turbo gear-the max speed for 5 min. Only for model X35-P60. PF: AI Surfing gear, speed cycling.
 Timer	Sets runtime	6 options to set runtime for 15 min/ 30 min/ 45 min/ 60 min/ 75 min/ 90 min.Only for model X35-P60.

## Display & Description

Model	Display area	Function	Description
P60		Show battery level	<p>Each strip of LED represents 25% of the battery level, increasing clockwise. When the battery level changes, the corresponding strip flashes. For example, when the battery level is 56%, the LED 1&amp;2 light on and the LED 3 fashes.</p> <p>When the battery level &gt;=98%, all LED bars are on.</p> <p>When the battery level=0%, the LED 1 flashing to remind charging..</p>
	 WIFI	Show WiFi state	<p>Disconnected: light off</p> <p>Preparing for connect : flashing. Preparation time is 1min.</p> <p>Connected:light on for 1 min.</p>
P30/P15/P10		Show battery level	<p>Each strip of LED represents 20% of the battery level, increasing from left to right. When the battery level changes, the corresponding strip flashes. For example, when the battery level is 56%, the LED 1&amp;2 light on and the LED 3 fashes.</p> <p>When the battery level &gt;=98%, all LED bars are on.</p> <p>When the battery level=0%, the LED 1 flashing to remind charging.</p>
		Show gear	<p>4 gear: P1/P2/P3/P4</p> <p>P1-P4: Different flow speed, from low to high;</p> <p>P1 : LED 1&amp;2; P2 : LED 2&amp;3;</p> <p>P3 : LED 3&amp;4; P4 : LED 4&amp;5.</p>
		Show WiFi state	<p>Preparing for connect : turns green and flashing</p> <p>Connected : turns green and stop falsing for 1min then back to battery level display</p>

## 5.4 Power Box Charging Instructions

### Charging Guidelines

- Use only the provided charger. Using other chargers may cause damage or injury and void warranty.
- Charger indicator light color explanation: Red: Charging; Green: Fully charged or no load.
- Charging time: 7 hours around for P60. Automatically stops when full.
- Charge in a cool, dry, well-ventilated area (recommended 68–86°F) to extend battery life.
- If battery temperature exceeds 147.2 °F, charging will stop automatically. Please stop charging immediately and allow the battery to cool down before attempting to charge again. Additionally, after each use, always let the battery cool before charging.
- When the battery level drops below 10%, high-speed gears (PE / P4) are not recommended. To help extend battery life, recharge the battery as soon as possible.
- Fully charge the power box before first use.
- Please try to fully charge the battery at once to reduce the number of charging cycles and extend the battery life.
- Avoid fully discharging the battery during use.

### Warning:

- Never charge near water. Maintain at least 11.48ft from the pool.
- Do NOT leave the battery unattended while charging.
- Stop charging immediately if you observe leakage, overheating, smoke, odor, or sparks.

## 5.5 App Usage Guide

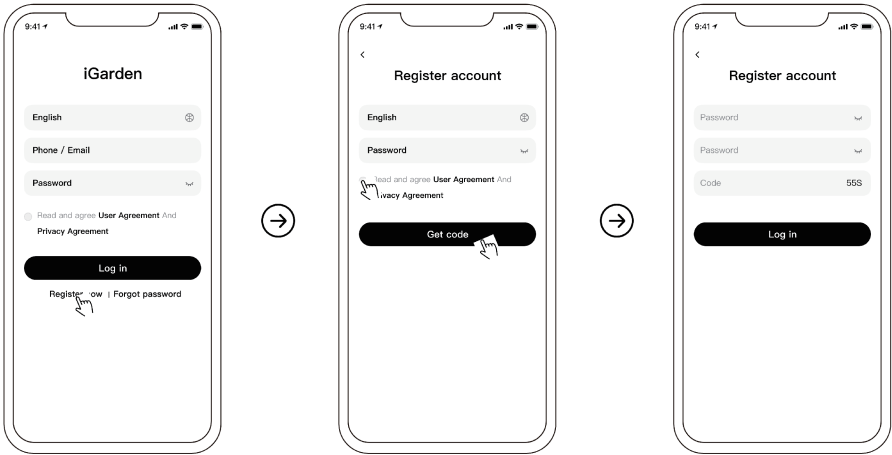
### 5.5.1 App Download

Download 'iGarden' app in the app store.

- Android: Google Play
- iOS: App Store

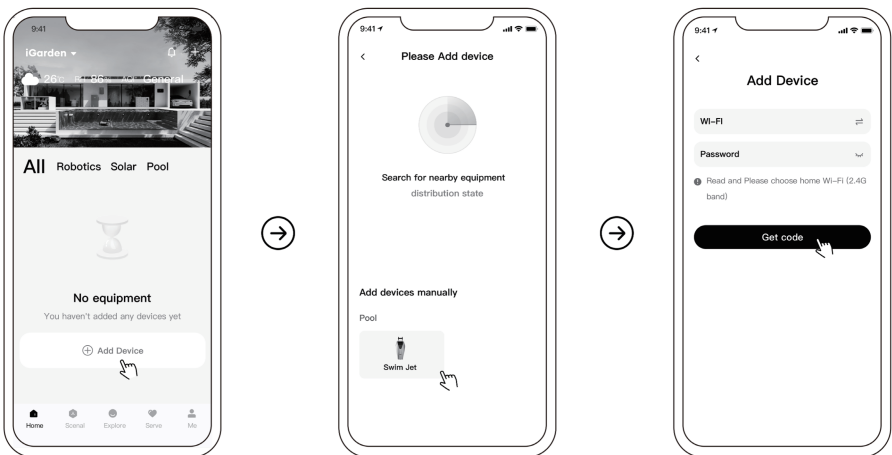
### 5.5.2 Account Registration & Login

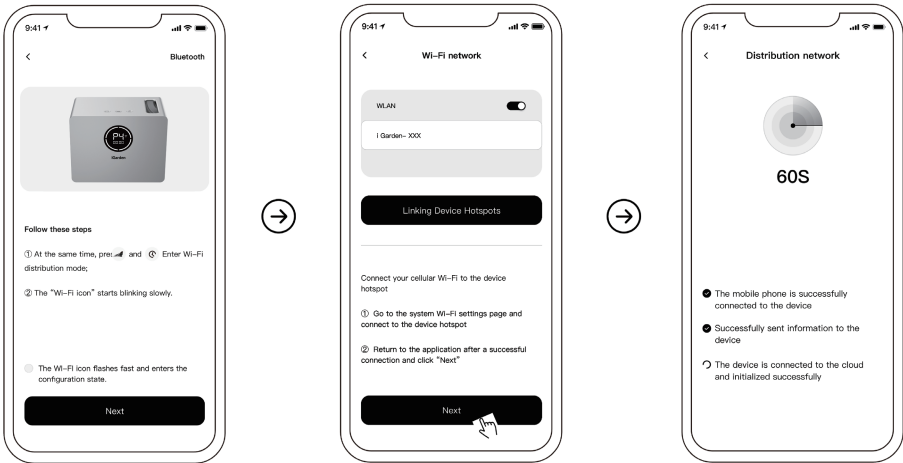
Sign up using email or phone number.



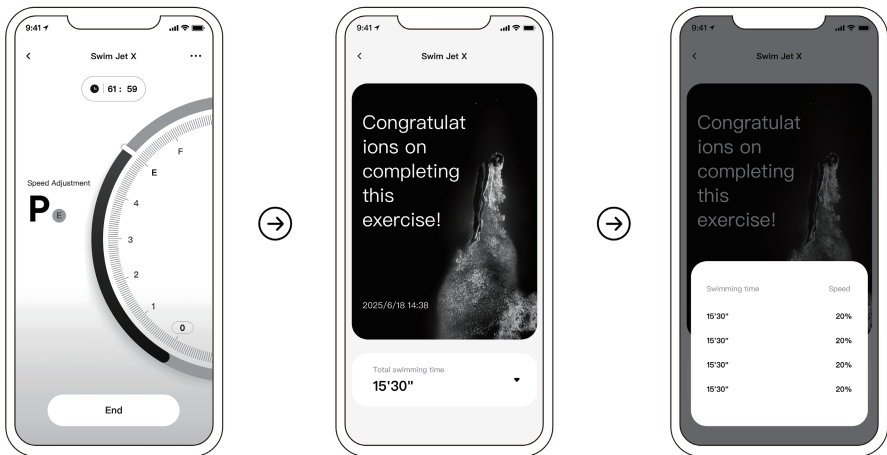
### 5.5.3 Add Device & Network Setup

- Power on the Power box.
- For P60, press and hold Speed and Timer for 2 seconds until Wi-Fi icon flashes slowly (pairing mode). For P30/P15/P10, press and hold Speed and Power for 2 seconds until LED turns green and flashing (preparing mode).
- Open the iGarden app to tap "Add Device". Please make sure your home Wi-Fi is on 2.4GHz.
- Follow on-screen instructions to complete pairing.
- Your device will appear on the Home on the My Garden page.



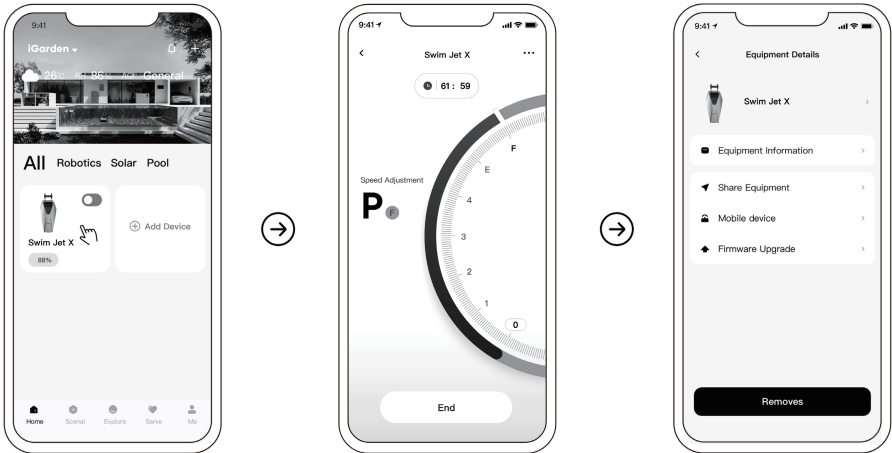


### 5.5.4 Workout Settings



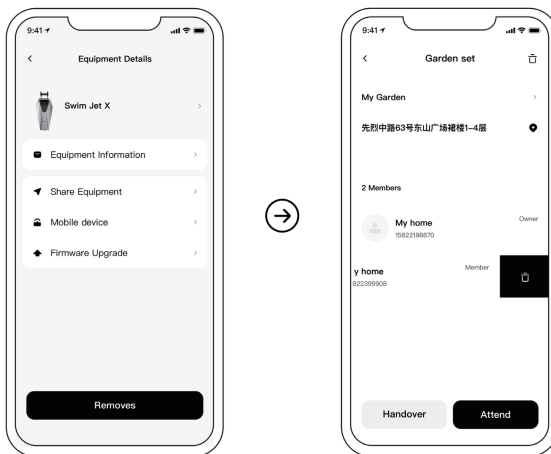
Adjust workout intensity and duration in the app and view workout history after each session.

## 5.5.5 Device Control



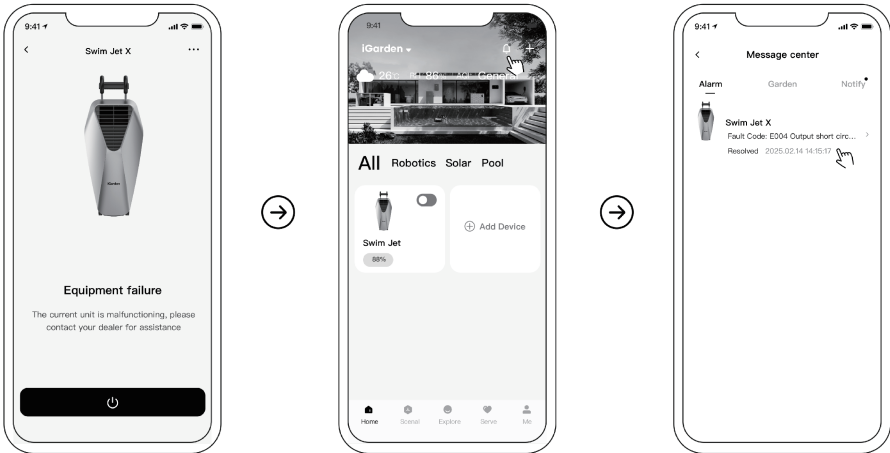
Remotely control and rename or remove the device in Equipment Details page.

## 5.5.6 Share Device



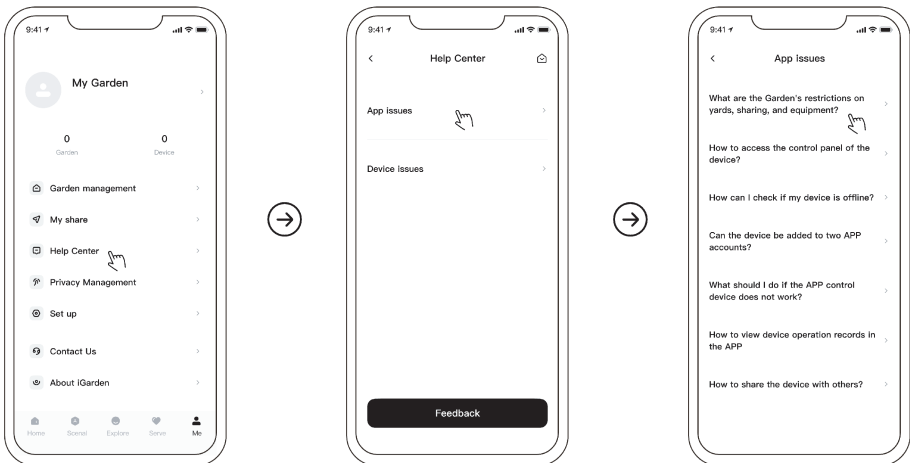
Share device access with other users in Equipment Details page.

### 5.5.7 Troubleshooting



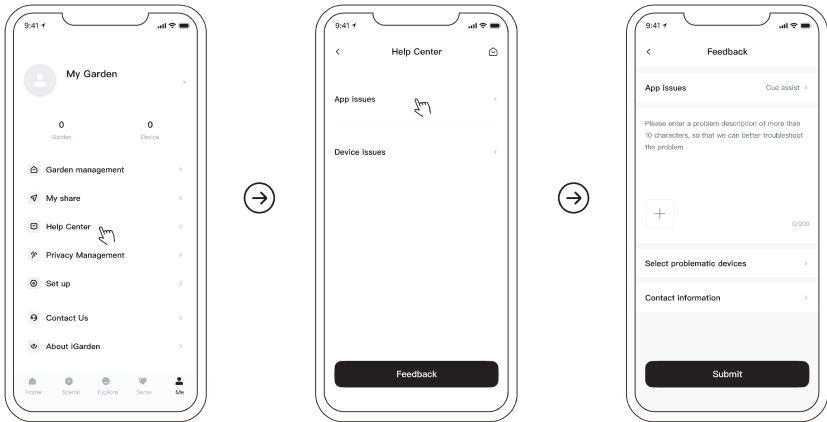
If an error occurs, check the Message Center for fault notifications and error codes. Contact your dealer if the issue persists.

### 5.5.8 Help Center



Browse FAQ to find solutions for common issues.

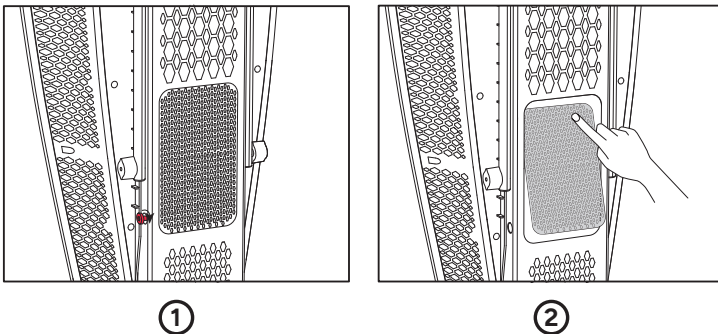
## 5.5.9 Feedback Submission

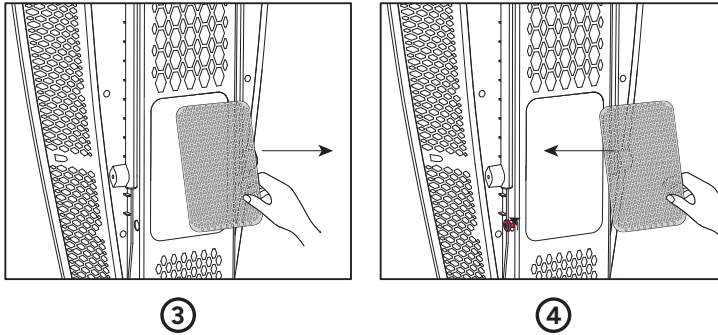


## 6 Product Maintenance & Storage

### 6.1 Maintenance Tips

- This jet is suitable for use in salt water. Please rinse thoroughly with fresh water and wipe dry after each use. Avoid concentrated cleaners to prevent corrosion.
- Avoid impacts, drops, or strong vibrations.
- Secure the device properly during transport.
- Remove the back cover regularly to clean the jet as follows:
  - a. Remove the side fixing screws.
  - b. Press the top of the back cover to lift the bottom edge, then remove the cover.
  - c. Remove debris inside, then reinstall the back cover and tighten the side screws.





## 6.2 Storage Requirements

- Please store between 32–113°F.
- Please avoid direct sunlight; keep in a cool, dry, ventilated place.
- Please lay the jet flat to avoid knocking it over or causing damage.
- Please charge battery to 60% before long-term storage. Low battery stored for long periods may cause irreversible damage.
- For long-term storage, please recharge every 3 months (discharge to 30%, then recharge to 60%).
- If battery enters deep-sleep mode due to low charge, please recharge before use.
- Please keep away from children and pets.

## 7 Error Codes & Troubleshooting

### 7.1 Error

Model	Error Code	Cause	Solution
P60	E0	Motor fault	Restart the jet. Contact after-sales service for support if error persists.
	B0	Battery fault	Restart the jet. Contact after-sales service for support if error persists.

P30/P15/P10	All LED turns red and the buzzer flashes slowly	Motor fault Battery fault	Restart the jet. Contact after-sales service for support if error persists.
	All LED turns red and the buzzer flashes rapidly	Battery fault	Restart the jet. Contact after-sales service for support if error persists.

## 7.2 Warning

P60 Device Status	P30/P15/P10 Device Status	Cause	Solution
LED strip flashes rapidly, and the buzzer sounds periodically	All LED turns yellow	Battery Charging Protection: high or low temperatures, overcurrent, overvoltage, etc.	Stop charging, turn off the power, and place the power box in an environment of 50-86°F for a while.
		Battery Operation Protection: high or low temperatures, overcurrent, undervoltage, etc.	1. The battery level is low, stop use and charge battery; 2. The temperature is abnormal, turn off the power box and place it in an environment of 50-86°F for a while.
		Triggered Displacement Shutdown Command: There is a gyroscope inside the power box. Moving the power box while the motor is running will cause the motor to stop.	Once the power box is no longer moving, the warning will be cleared; and you can restart the jet to continue use.
		Others	Try restart the device. If the problem persists, please contact after-sales service.

## 8 Disposal

This product contains a battery classified as hazardous material. Do NOT dispose with household trash.

- Fully discharge the battery before placing it in a designated recycling bin.
- If the battery cannot be safely discharged due to product failure, contact a professional recycling service.
- Follow all local battery disposal regulations.

## 9 Certifications



COMFORMS  
TO UL STD.1081  
CERTIFIED TO  
CSA STD.C22.2  
NO.108

### Certification important safety instructions

When installing and using this electrical equipment, basic safety precautions should always be followed, including the following:

- READ AND FOLLOW ALL INSTRUCTIONS.
- WARNING – To reduce the risk of injury, do not permit children to use this product unless they are closely supervised at all times.
- WARNING – To reduce the risk of electric shock, replace damaged cord immediately.
- Caution: To ensure continued protection against shock hazard, use only identical replacement parts when servicing.
- Do not run dry.
- WARNING: DO NOT PERMIT THE Rechargeable battery WITHIN 1.5 M OF POOLS.

# iGarden

 [www.igarden.ai](http://www.igarden.ai)

Version: AMZ-X-V2(EN)

Thank you for choosing our Swim Jet X Series.